

GENERAL NOTES:

METER AND BYPASS ASSEMBLY TO BE DUCTILE IRON FLANGED PIPE.

METER FACE TO BE A MAXIMUM OF 3.5' BELOW FINISHED GRADE.

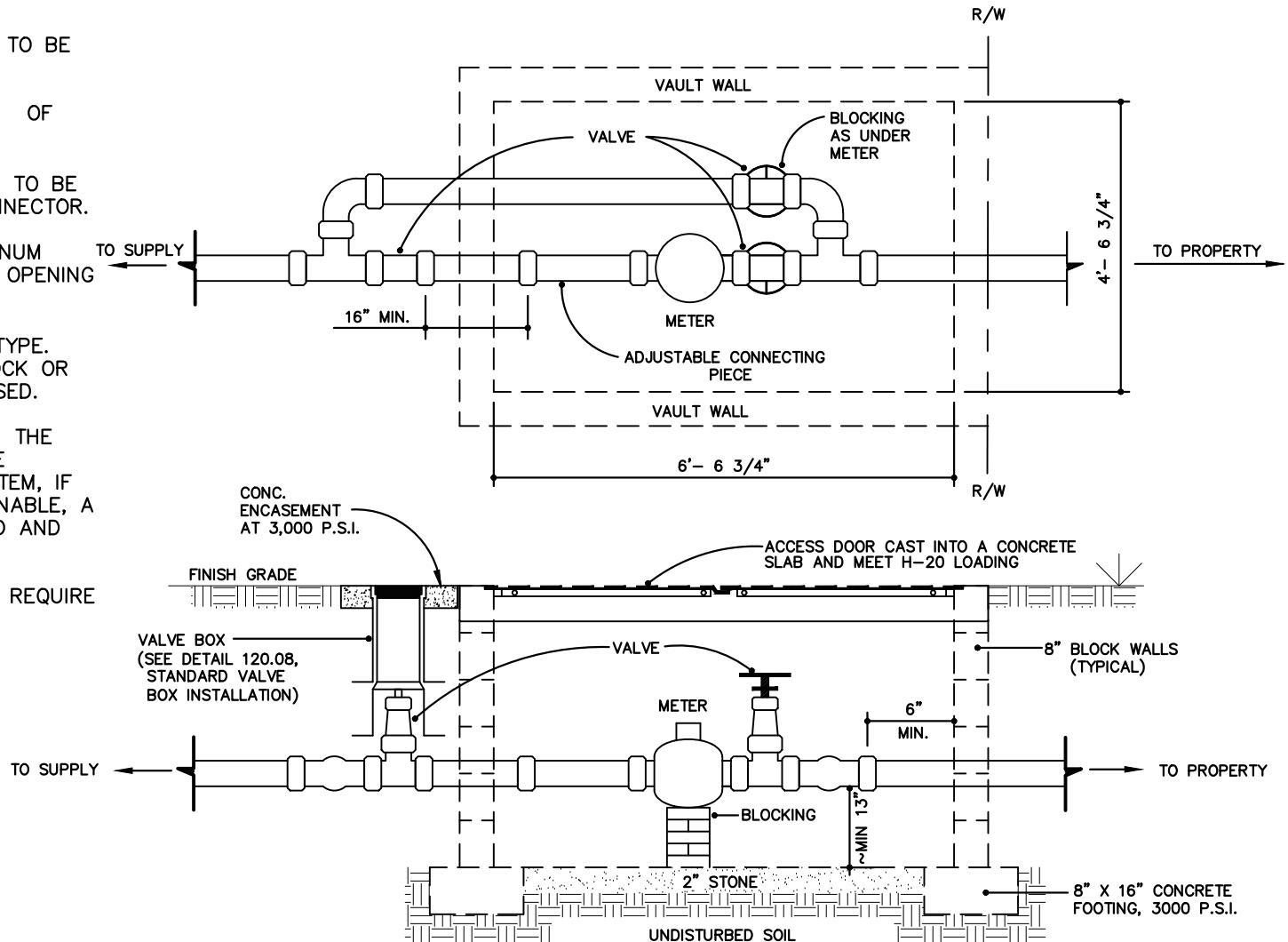
ADJUSTABLE CONNECTING PIECE TO BE CLOW F-1439 ADJUSTABLE CONNECTOR.

ACCESS DOOR SHALL BE ALUMINUM DOUBLE DOOR WITH A MINIMUM OPENING OF 42" X 36".

VALVES SHALL BE IRON BODY TYPE. EITHER SOLID BRICK, SOLID BLOCK OR PRECAST CONCRETE MAY BE USED.

TO ENSURE POSITIVE DRAINAGE, THE VAULT SHALL BE TIED INTO THE EXISTING STORM DRAINAGE SYSTEM, IF POSITIVE DRAINAGE IS UNOBTAINABLE, A SUMP PUMP SHALL BE LOCATED AND OPERATED IN THE VAULT.

ALL COMMERCIAL APPLICATIONS REQUIRE AN ABOVE GROUND BACKFLOW PREVENTER.



EFFECTIVE: JANUARY 1, 2019



TOWN OF FUQUAY-VARINA
STANDARD DETAILS

3 INCH AND 4 INCH METER
AND VAULT INSTALLATION

DETAIL No.
120.05
SHEET 01 of 01